

220

# ZECA

## UNREEL THE POWER

ENGLISH

AUTOMOTIVE  
Catalogue





# ALUMINIUM BODY

## HOSE REEL AL series



ALUMINIUM  
BODY



AL83/10



AL81/8

**NEW**



ISO EN 12100-1  
ISO EN 12100-2

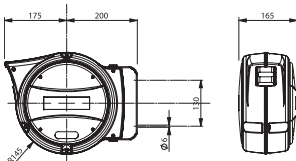


2006/42/CE

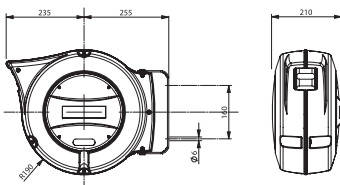
### TECHNICAL FEATURES

- Polyurethane hose.
- Diecast aluminium casing, undercoat paint finish.
- Complete with pivot bracket.
- Provided with hose ratchet stop device, at desired length, easily removable if constant traction is required.

### DIMENSIONS AL81



### DIMENSIONS AL83



Art.	AL81/8	AL83/10
hose int. Ø	8 mm (5/16")	10 mm (3/8")
hose m	10 (9 + 1)	16 (15 + 1)
max press	15 bar (1,5 Mpa)	15 bar (1,5 Mpa)
temperature	-5°/+40° C	-5°/+40° C
End pipe fitting	1/4" M	3/8" M
Incoming fitting	NO	NO
Incoming pipe	1,5 m	1,5 m
air	YES	YES
cold water	YES	YES
	44	20
	mm 355x310x180 Kg 6	mm 450x390x215 Kg 9

\* EXCLUDED THE PARTS SUBJECTED TO WEAR  
(FOR EXAMPLE SPRING AND HOSE)



# HOSE REEL 804-805 series

804



805



BEST SELLER



ISO EN 12100-1  
ISO EN 12100-2



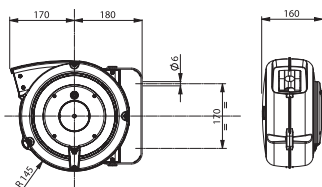
2006/42/CE

## TECHNICAL FEATURES

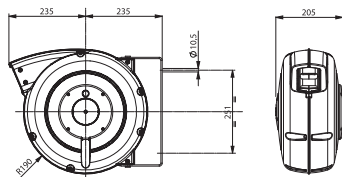
- Plastic outer casing.
- Complete with pivot bracket.
- Provided with hose ratchet stop device, every 50 cm, easily removable if constant traction is required.
- Polyurethane hose.

**ART. 949/804-4000 / ART. 949/805-7000** - Optional device to fasten the pivoting bracket.

## DIMENSIONS 804



## DIMENSIONS 805



Art. SILVER	804/8/S	805/8/S	805/10/S
Art. YELLOW	804/8	805/8	805/10
hose int. Ø	8 mm (5/16")	8 mm (5/16")	10 mm (3/8")
hose m	10 (9 + 1)	16 (15 + 1)	16 (15 + 1)
max press	15 bar (1,5 Mpa)	15 bar (1,5 Mpa)	15 bar (1,5 Mpa)
temperature	-5°/+40° C	-5°/+40° C	-5°/+40° C
End pipe fitting	1/4" M	1/4" M	3/8" M
Incoming fitting	NO	NO	NO
Incoming pipe	1,5 m	1,5 m	1,5 m
air	YES	YES	YES
cold water	YES	YES	YES
	44	20	20
	mm 340x340x160 Kg 4	mm 430x400x210 Kg 7	mm 430x400x210 Kg 7





# HOSE REEL AMERICA series

## SERIE AMERICA



AM85/8

AM85/10



AM80/8

### TECHNICAL FEATURES

- Polyurethane hose, black colour.
- Casing made of special heavy duty plastic.
- Complete with pivot bracket.
- Provided with hose ratchet stop device, every 50 cm., easily removable if constant traction is required.
- Suitable for air transmission.

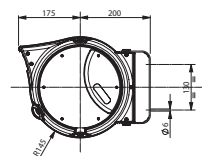


ISO EN 12100-1  
ISO EN 12100-2

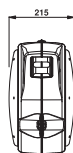
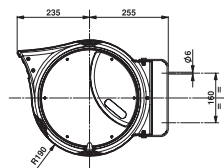




2006/42/CE

### DIMENSIONS AM80



### DIMENSIONS AM85



Art.	AM80/8	AM85/8	AM85/10
hose int. Ø	8 mm (5/16")	8 mm (5/16")	10 mm (3/8")
hose m	10 (9 + 1)	16 (15 + 1)	16 (15 + 1)
max press	15 bar (1,5 Mpa)	15 bar (1,5 Mpa)	15 bar (1,5 Mpa)
temperature	-5°/+40° C	-5°/+40° C	-5°/+40° C
End pipe fitting	1/4" M	1/4" M	3/8" M
Incoming fitting	NO	NO	NO
Incoming pipe	1,5 m	1,5 m	1,5 m
air	YES	YES	YES
cold water	NO	NO	NO
	40	20	20
	mm 390x330x230 Kg 4,5	mm 500x450x255 Kg 8,0	mm 500x450x255 Kg 8,0



# HOSE REEL 813 series



813/8

813/10



813/8/S

813/10/S



ISO EN 12100-1  
ISO EN 12100-2



2006/42/CE

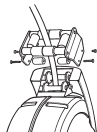
## TECHNICAL FEATURES

- Polyurethane hose.
- Diecast aluminium casing, undercoat paint finish.
- Complete with pivot bracket for mounting.
- Provided with hose ratchet stop device, every 50 cm, easily removable if constant traction is required.

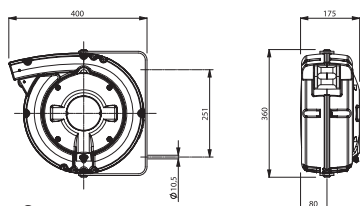
## OPTIONAL



**ART. 949/PR** - Optional device to fasten the pivoting bracket.

**ART. 953** - Roller-cable guide, necessary for ceiling applications.



## DIMENSIONS



Art. SILVER	813/8/S	813/10/S
Art. YELLOW	813/8	813/10
hose int. Ø	8 mm (5/16")	10 mm (3/8")
hose m	12 (10 + 2)	9 (7 + 2)
max press	12 bar (1,2 Mpa)	12 bar (1,2 Mpa)
temperature	-5°/+40° C	-5°/+40° C
End pipe fitting	1/4" M	3/8" M
Incoming fitting	1/4" M	3/8" M
Incoming pipe	2 m	2 m
air	YES	YES
cold water	YES	YES
	30	30
	mm 400x370x190 Kg 10,5	mm 400x370x190 Kg 10,5



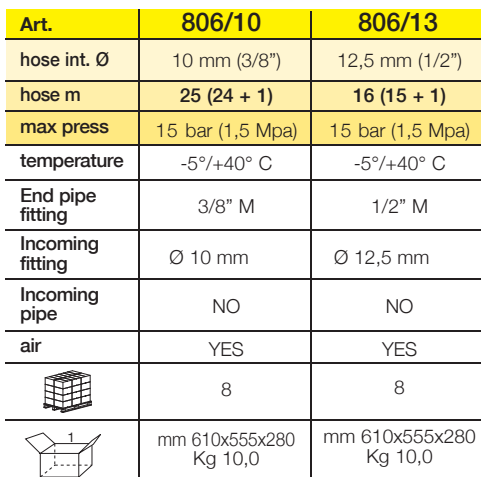
Large-sized hose reel:

- Spring operated rewinding.
- Casing made of technical plastic material.
- Pivot metal bracket.
- Provided with hose ratchet stop device, every 50 cm, easily removable if constant traction is required.
- Polyurethane hose.
- Particularly recommended for application with manual payout.

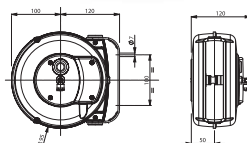


2006/42/CE

## DIMENSIONS



- With 5,5 + 1 m monoextruded Polyurethan hose 6x8.
- Plastic outer casing.
- Mini-reel for applications in the industrial sector and for hobby.
- Anti-shock structural elements.
- Provided with hose ratchet stop device, every 50 cm, easily removable if constant traction is required.
- Working temperature: -5°C / +40°C.



<b>Art.</b>	<b>9100/6</b>
hose int. Ø	5,5 mm
hose m	6,5 (5,5 + 1)
max press	12 bar (1,2 Mpa)
temperature	-5°/+40° C
End pipe fitting	1/4" M
Incoming fitting	Ø 6x8
Incoming pipe	NO
air	YES
cold water	YES



## HOSE REEL 8000 series **LOW PRESSURE**

### TECHNICAL FEATURES

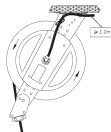
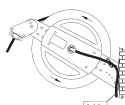
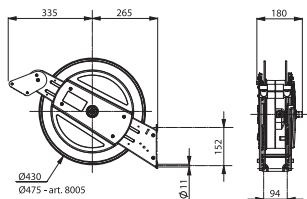
- Drum made of special heavy duty plastic.
- Supporting bracket made of galvanised corrosion resistant steel.
- Suitable for different mounting positions (see pictures).
- Hose ratchet stop device at desired lenght, easily removable if constant traction is required.
- Brass/stainless steel rotating joint.
- Universal stroke end pad.
- Models with and without hose for air, water and oil transmission.

### OPTIONAL

**ART. 8100** - Swivelling bracket.



**POLYURETHANE  
HOSE**



Art.	8001	8003	8004	8005
hose int. Ø	NO HOSE	10 mm (3/8")	12,5 mm (1/2")	12,5 mm (1/2")
hose m	-	21 (20 + 1)	16 (15 + 1)	21 (20 + 1)
max press	20 bar (2,0 Mpa)	20 bar (2,0 Mpa)	20 bar (2,0 Mpa)	20 bar (2,0 Mpa)
temperature	-5° + 50° C	-5° + 50° C	-5° + 50° C	-5° + 50° C
End pipe fitting	3/8" F	3/8" M	1/2" M	1/2" M
Incoming fitting	1/2" M	1/2" M	1/2" M	1/2" M
Incoming pipe	NO	NO	NO	NO
air	YES	YES	YES	YES
cold water	YES	YES	YES	YES
	10	10	10	10
	mm 590x430x215 Kg 13,0	mm 590x430x215 Kg 19,0	mm 590x430x215 Kg 19,0	mm 565x515x300 Kg 19,0

ISO EN 12100-1  
ISO EN 12100-2



2006/42/CE





## HOSE REEL 8000 series **HIGH PRESSURE**

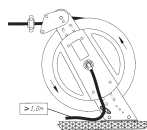
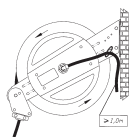
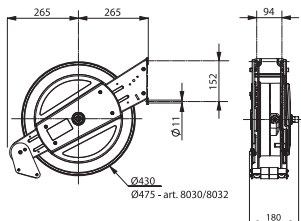
### TECHNICAL FEATURES



- Drum made of special heavy duty plastic.
- Supporting bracket made of galvanised corrosion resistant steel.
- Suitable for different mounting positions (see pictures).
- Hose ratchet stop device at desired lenght, easily removable if constant traction is required.
- Brass/stainless steel rotating joint.
- Universal stroke end pad.
- Models with and without hose for air, water and oil transmission.

### OPTIONAL

**ART. 8100** - Swivelling bracket.

**ART. 8009** - 22x1,5 adapter for high pressure reel (for Kärcher washing machine).



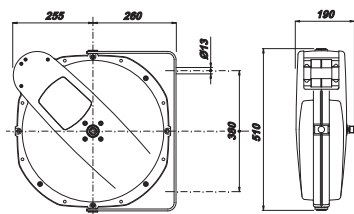
Art.	8010	8030	8032
hose int. Ø	NO HOSE	10 mm (3/8")	8 mm (5/16")
hose m	-	<b>15 (14 + 1)</b>	<b>20 (19 + 1)</b>
max press	200 bar (20,0 Mpa)	200 bar (20,0 Mpa)	200 bar (20,0 Mpa)
temperature	-5°/+ 155° C	-5°/+ 155° C	-5°/+ 155° C
End pipe fitting	3/8" F	3/8" F rotating	3/8" F rotating
Incoming fitting	1/2" M	1/2" M	1/2" M
Incoming pipe	NO	NO	NO
air	YES	YES	YES
cold water	YES	YES	YES
oil	YES	YES	YES
HP water	YES	YES	YES
hose	-	rubber SAE 100 R1 AT	rubber SAE 100 R1 AT
	10	10	10
	mm 590x430x215 Kg 13,0	mm 565x515x300 Kg 19,0	mm 565x515x300 Kg 19,0



## HOSE REEL 8800 series








### TECHNICAL FEATURES

- Casing made of die-cast aluminium with paint finish.
- Hose ratchet stop device at desired length, easily removable if constant traction is required.
- Brass/stainless steel rotating joint.
- Available with swivelling bracket for low pressure models and with wall or ceiling mountable fixed bracket for high pressure models.



ALUMINIUM  
BODY



	LOW PRESSURE			HIGH PRESSURE	
					
Art.	8801	8803	8804	8810	8830
hose int. Ø	NO HOSE	10 mm (3/8")	12,5 mm (1/2")	NO HOSE	10 mm (3/8")
hose m	NO HOSE	21 (20 + 1)	16 (15 + 1)	NO HOSE	15 (14 + 1)
max press	20 bar (2,0 Mpa)	20 bar (2,0 Mpa)	20 bar (2,0 Mpa)	200 bar (20,0 Mpa)	200 bar (20,0 Mpa)
temperature	-5°/+50° C	-5°/+50° C	-5°/+50° C	max 155° C	max 155° C
End pipe fitting	3/8" F	3/8" M	1/2" M	3/8" F	3/8" F rotating
Incoming fitting	1/2" M	1/2" M	1/2" M	1/2" M	1/2" M
Incoming pipe	NO	NO	NO	NO	NO
air	YES	YES	YES	YES	YES
oil	NO	NO	NO	YES	YES
cold water	YES	YES	YES	YES	YES
HP water	NO	NO	NO	YES	YES
hose	-	PU	PU	-	rubber SAE 100 R1 AT
	8	8	8	8	8
	mm 565x515x295 Kg 14,0	mm 565x515x295 Kg 20,0	mm 565x515x295 Kg 20,0	mm 565x515x295 Kg 14,0	mm 565x515x295 Kg 20,0



- Painted aluminium and steel case;
- Side fastening aluminium bracket, with ratchet (these hose reels are delivered with disconnected ratchet, and it can easily inserted by user before the installation);
- Roller hose-guide;
- Air transmission pivoting joint without slotting;
- Steel springs suitable to grant the optimum hose traction and a long life.

## OPTIONAL

**ART. 8901** - Optional bracket for wall

[illegible]11



# BALANCERS



0,4 ÷ 3 kg



2 ÷ 14 kg

DIN 15112  
ISO EN 12100-2



2006/42/CE

630

631

632

INOX Ø 2mm

ALUMINIUM  
BODY

633

634

635

636

637

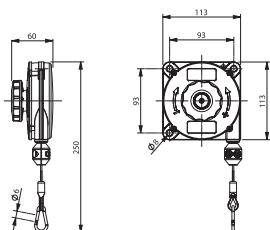
INOX Ø 2,5mm

Zeca balancers, designed to sustain manual tools, screw drivers, etc. An essential help for consecutive work, assembly, mass production, packaging, etc. Zeca balancers are manufactured of high quality material and resist to heavy working cycle. The balancers are manufactured in 2 different dimensions.

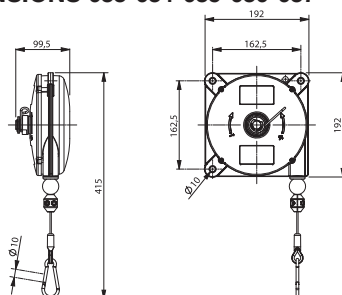
## TECHNICAL FEATURES


- Die-cast aluminium case.
- Inox steel support cable.
- Continuous capacity adjustment from max. value to min. value.
- Cable travel easily adjusted for fitting every need.
- Four suspension points.

## DIMENSIONS 630-631-632



## DIMENSIONS 633-634-635-636-637



Art.	630	631	632	633	634	635	636	637
capacity Kg	0,4 ÷ 1	1 ÷ 2	2 ÷ 3	2 ÷ 4	4 ÷ 6	6 ÷ 8	8 ÷ 10	10 ÷ 14
travel mm	1600	1600	1600	2500	2500	2500	2500	2500
weight gr	630	670	790	2850	3000	3100	3200	3500
	mm 170x125x70 Kg 0,7	mm 170x125x70 Kg 0,8	mm 170x125x70 Kg 0,9	mm 245x200x110 Kg 3,2	mm 245x200x110 Kg 3,3	mm 245x200x110 Kg 3,4	mm 245x200x110 Kg 3,5	mm 245x200x110 Kg 3,8





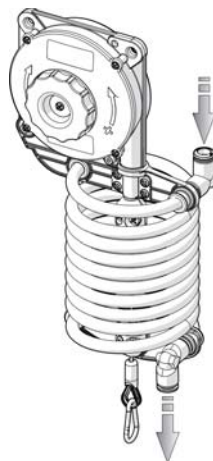
## SPIRAL HOSE FOR BALANCERS



**NEW**

**PRESS MAX  
10 BAR**

**WORKING TEMP.  
-20°/+80°**



Spiral hose (PA12) 8 x 10 for balancers

This useful accessory can be applied on balancers art. 630, 631 and 632.

Supplied complete with assembly instructions, all accessories and an additional m of hose for connection to the compressed air network and to the tool.

**ART. 982** - Spiral hose applicable on balancers art. 630, 631 and 632 (balancer NOT included).



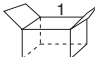
## ROTLIFT - SPRING LIFTING DEVICE-SUSPENSEUR



**5,5 ÷ 18 kg**

Ø  
6 mm.

Cable reel series PR equipped with stopping device, designed to recoil a steel cable to which tools, that have to be lowered to the work area for a limited period, may be suspended. By releasing the stopping device, the objects may be raised again above the operating area after use. **The capacity of these cable reels is set at the factory and is not, therefore, adjustable by the user.** "Rotolift" can be used in garages equipped with an overhead exhaust discharge system, which utilises flexible down pipe connecting hoses. In this case, when the flexible hose is not in use, "Rotolift" keeps it up, above the operating area.

Art.	6626	6627	6628
capacity Kg	5,5 ÷ 8,5	9 ÷ 12	11 ÷ 18
travel m	4 + 3	4 + 3	4 + 3
	mm 400x370x235 Kg 11	mm 400x370x235 Kg 11	mm 400x370x235 Kg 11



# CABLE REEL 5000 SERIES WITHOUT TRANSFORMER



## SPARE PARTS

**ART. 5907/5908** - Conversion kit from 5907 to 5908.  
(Mod. 5508/T306-5908/T306).

**ART. 379** - Plastic bell.  
(Mod. 5907/375 - 5507/375).



**ART. AM500** - Plastic bell.  
(Mod. 5907/AM8 230V  
5907/AM8 24V).



**ART. 528** - Plastic bell.  
(Mod. 5907/328 230V  
5907/328 24V).



**ART. 371** - Plastic bell.  
(Mod. 5907/370).



**ART. 355** - Tube 11W.  
(Mod. 5908/AM8-5908/328  
5508/328).



Art. SILVER



5507/T306

5507/375








Art. YELLOW

5907/T306

5907/375

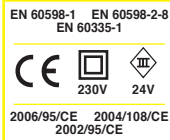


5907/AM8 230V

Description	Cable reel with lamp T306	Cable reel with lamp 375	Cable reel with lamp AM8 230V
m. coiled	m 15,5 (14 + 1,5)	m 15,5 (14 + 1,5)	m 15,5 (14 + 1,5)
feeding cable	1 m	1 m	1 m
cable type	H05 RN-F-2x1mm <sup>2</sup>	H05 RN-F-2x1mm <sup>2</sup>	H05 RN-F-2x1mm <sup>2</sup>
lamp model	T306 	375 	AM8 230V 
bulb	NO	NO	YES
max Watt bulb	60W	15W	11W
lamp holder	E27	E27	2G7
lamp protection degree	IP20	IP65	IP55
reel protection degree	IP42	IP42	IP42
voltages input	Max 250V	Max 250V	230V
	60	60	60
	mm 390x310x165 Kg 4,5	mm 390x310x165 Kg 4,5	mm 390x310x165 Kg 4,5

## TECHNICAL FEATURES

- Structural elements of cable reel in shock-resistant plastic material.
- Roller cable guide, facilitating homing of cable.
- Ratchet stop.
- Wall-mountable steel bracket.
- Rewinding cable spring at high resistance.
- Wiping contacts with collector ring and brushes.
- Working temperature: -5°C/+ 40°C.



    					
					
<b>5907/AM8 24V</b>	<b>5507/328 230V</b>	<b>5507/328 24V</b>	<b>5907/329 230V</b>	<b>5907/329 24V</b>	<b>5907/370</b>
Cable reel with lamp AM8 24V	Cable reel with fluo lamp 328 230V	Cable reel with fluo lamp 328 24V	Cable reel with lamp 329 230V	Cable reel with lamp 329 24V	Cable reel with lamp 370
m 15,5 (14 + 1,5)	m 15,5 (14 + 1,5)	m 15,5 (14 + 1,5)	m 15,5 (14 + 1,5)	m 15,5 (14 + 1,5)	m 15,5 (14 + 1,5)
1 m	1 m	1 m	1 m	1 m	1 m
H05 RN-F-2x1mm <sup>2</sup> AM8 24V	H05 RN-F-2x1mm <sup>2</sup> 328 230V	H05 RN-F-2x1mm <sup>2</sup> 328 24V	H05 RN-F-2x1mm <sup>2</sup> 329 230V	H05 RN-F-2x1mm <sup>2</sup> 329 24V	H05 RN-F-2x1mm <sup>2</sup> 370
					
YES	YES	YES	YES (30 led)	YES (30 led)	NO
11W	11W	11W	-	-	Max 60W
2G7	2G7	2G7	-	-	E27
IP55	IP55	IP55	IP55	IP55	IP65
IP42	IP42	IP42	IP42	IP42	IP42
24Vac	230V	24Vac	230V	12Vdc/ac - 24Vdc/ac	Max 250V
60	60	60	60	60	60
mm 390x310x165 Kg 4,5	mm 390x310x165 Kg 4,5	mm 390x310x165 Kg 4,5	mm 390x310x165 Kg 4,5	mm 390x310x165 Kg 4,5	mm 390x310x165 Kg 4,5



# CABLE REEL 5000 SERIES WITH TRANSFORMER



**Art. SILVER**

**5508/T306**



**Art. YELLOW**

**5908/T306**

## SPARE PARTS

**ART. 379** - Plastic bell.  
(Mod. 5908/375 - 5508/375).



**ART. AM500** - Plastic bell.  
(Mod. 5908/AM8 24V).



**ART. 528** - Plastic bell.  
(Mod. 5908/328 24V -  
5508/328 24V)






**ART. 371** - Plastic bell.  
(Mod. 5908/370).



**ART. 355** - Tube 11W.  
(Mod. 5908/AM8-5908/328 - 5508/328).

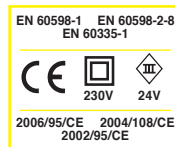


Art. YELLOW	5908/T306
Description	Cable reel with transfo + lamp T306
m. coiled	m 15,5 (14 + 1,5)
feeding cable	1 m
transfo features	power: 63VA input: 230V output: 12V e 24V
cable type	H05 RN-F-2x1mm <sup>2</sup>
lamp model	T306 
bulb	NO
max Watt bulb	60W
lamp holder	E27
lamp protection degree	IP20
reel protection degree	IP42
voltages input	230V
	44
	mm 345x305x230 Kg 6,0



This model allows to have the lamp feeded at low voltage (24V), as requested by the safety rules of many countries.

## TECHNICAL FEATURES OF LAMP SEE PAGE 15



<b>5508/375</b>		<b>5508/328</b>		
<b>5908/375</b>	<b>5908/AM8</b>	<b>5908/328</b>	<b>5908/329</b>	<b>5908/370</b>
Cable reel with transfo + lamp 375	Cable reel with transfo + lamp AM8	Cable reel with transfo + lamp 328 24V	Cable reel with transfo + lamp a led 329	Cable reel with transfo + lamp 370
m 15,5 (14 + 1,5)	m 15,5 (14 + 1,5)	m 15,5 (14 + 1,5)	m 15,5 (14 + 1,5)	m 15,5 (14 + 1,5)
1 m	1 m	1 m	1 m	1 m
power: 14VA input: 230V output: 24V	power: 14VA input: 230V output: 24V	power: 14VA input: 230V output: 24V	power: 14VA input: 230V output: 24V	power: 63VA input: 230V output: 12V e 24V
H05 RN-F-2x1mm <sup>2</sup>	H05 RN-F-2x1mm <sup>2</sup>	H05 RN-F-2x1mm <sup>2</sup>	H05 RN-F-2x1mm <sup>2</sup>	H05 RN-F-2x1mm <sup>2</sup>
NO	YES	YES	YES (30 led)	NO
Max 11W	11W	11W	-	Max 60W
E27	2G7	2G7	-	E27
IP65	IP55	IP55	IP55	IP65
IP42	IP42	IP42	IP42	IP42
230V	230V	230V	230V	230V
60	60	60	44	44
mm 390x310x165 Kg 4,5	mm 390x310x165 Kg 4,5	mm 390x310x165 Kg 4,5	mm 345x305x230 Kg 6,0	mm 345x305x230 Kg 6,0



CABLE REEL **AL SERIES**

**ALUMINIUM BODY**



#### TECHNICAL FEATURES

- Diecast aluminium casing, undercoat paint finish.
- Complete with pivot bracket for mounting.
- Provided with cable ratchet stop device, at desired length, easily removable if constant traction is required.
- Heavy duty spring.
- Slipping with brass rings and brushes.
- Working temperature -5°C/+40°C

EN 60598-1 EN 60598-2-8  
EN 60335-1




2006/95/CE 2004/108/CE  
2002/95/CE

## SPARE PARTS

**ART. 379** - Plastic bell. 

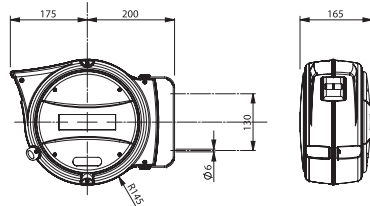
(Mod. AL47/375-AL48/375).

**ART. 355** - Tube 11W. (Mod. AL48/328). 

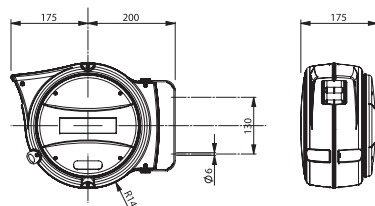
**ART. 528** - Plastic bell. 

(Mod. AL47/328 230V-AL47/328 24V-AL48/328). 

### DIMENSIONS AL47



### DIMENSIONS AL48



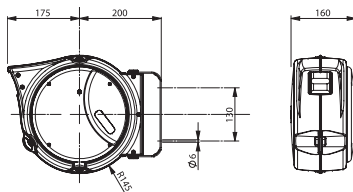
Art.	MODELS WITHOUT TRANSFORMER			MODELS WITH TRANSFORMER	
	AL47/375	AL47/328 230V	AL47/328 24V	AL48/375	AL48/328
Description	Cable reel with lamp 375	Cable reel with lamp 328 230V	Cable reel with lamp 328 24V	Cable reel with transfo + lamp 375	Cable reel with transfo + lamp 328 24V
m. coiled	m 15,5 (14 + 1,5)	m 15,5 (14 + 1,5)	m 15,5 (14 + 1,5)	m 15,5 (14 + 1,5)	m 15,5 (14 + 1,5)
feeding cable	1 m	1 m	1 m	1 m	1 m
transfo features	-	-	-	power: 14VA input: 230V output: 24V	power: 14VA input: 230V output: 24V
cable type	H05 RN-F-2x1mm <sup>2</sup>	H05 RN-F-2x1mm <sup>2</sup>	H05 RN-F-2x1mm <sup>2</sup>	H05 RN-F-2x1mm <sup>2</sup>	H05 RN-F-2x1mm <sup>2</sup>
lamp model	375 	328 230V 	328 24V 	375 	328 
bulb	NO	YES	YES	NO	YES
max Watt bulb	15W	11W	11W	11W	11W
lamp holder	E27	2G7	2G7	E27	2G7
lamp protection degree	IP65	IP55	IP55	IP65	IP55
reel protection degree	IP42	IP42	IP42	IP42	IP42
voltages input	Max 250V	230V	24Vac	230V	230V
	40	44	44	40	44
	mm 390x310x200 Kg 6	mm 390x310x200 Kg 6	mm 390x310x200 Kg 6	mm 390x310x200 Kg 6	mm 390x310x200 Kg 6



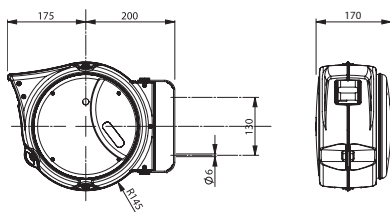
# CABLE REEL SERIE AM



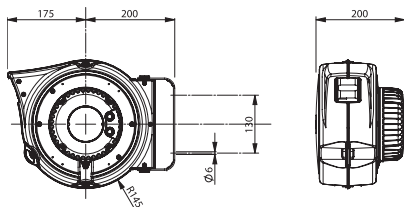
## DIMENSIONS AM57






## DIMENSIONS AM58



## DIMENSIONS AM58/306



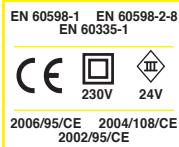
Art.	AM57/306
Description	Cable reel with lamp 306
m. coiled	m 15,5 (14 + 1,5)
feeding cable	1 m
transfo features	-
cable type	H05 RN-F-2x1mm <sup>2</sup>
lamp model	306 
bulb	NO
max Watt bulb	Max 60W
lamp holder	E27
lamp protection degree	IP20
reel protection degree	IP42
voltages input	Max 250V
	40
	mm 390x310x200 Kg 5

MODELS WITHOUT TRANSFORMER



## TECHNICAL FEATURES

- Casing made of resistant plastic
- Cable roller guide
- Ratchet stop device, easily inserted every 50 cm.
- Complete with pivot bracket.
- Heavy duty spring.
- Slipping with brass rings and brushes.
- Working temperature -5°C/+40°C



			MODELS WITH TRANSFORMER			
<b>AM57/375</b>	<b>AM57/AM8 230V</b>	<b>AM57/AM8 24V</b>		<b>AM58/306</b>	<b>AM58/375</b>	<b>AM58/AM8</b>
Cable reel with lamp 375	Cable reel with lamp AM8 230V	Cable reel with lamp AM8 24V		Cable reel with transfo + lamp 306	Cable reel with transfo + lamp 375	Cable reel with transfo + lamp AM8
m 15,5 (14 + 1,5)	m 15,5 (14 + 1,5)	m 15,5 (14 + 1,5)		m 15,5 (14 + 1,5)	m 15,5 (14 + 1,5)	m 15,5 (14 + 1,5)
1 m	1 m	1 m		1 m	1 m	1 m
-	-	-		power: 63VA input: 230V output: 12V e 24V	power: 14VA input: 230V output: 24V	power: 14VA input: 230V output: 24V
H05 RN-F-2x1mm <sup>2</sup> 375	H05 RN-F-2x1mm <sup>2</sup> AM8 230V	H05 RN-F-2x1mm <sup>2</sup> AM8 24V		H05 RN-F-2x1mm <sup>2</sup> 306	H05 RN-F-2x1mm <sup>2</sup> 375	H05 RN-F-2x1mm <sup>2</sup> AM8 24V
NO	YES	YES		NO	NO	YES
Max 15W	11W	11W		Max 60W	Max 11W	11W
E27	2G7	2G7		E27	E27	2G7
IP65	IP55	IP55		IP20	IP65	IP55
IP42	IP42	IP42		IP42	IP42	IP42
Max 250V	230V	24Vac		230V	230V	230V
40	40	40		44	40	40
mm 390x310x165 Kg 4,5	mm 390x310x165 Kg 4,5	mm 390x310x165 Kg 4,5		mm 345x305x230 Kg 6	mm 390x310x165 Kg 4,5	mm 390x310x165 Kg 4,5



## MINI REELS + LAMP

9001/328 230V

9001/328 24V

9001/T306








Small-sized cable reels with cable 7 m coiled +1 m free. Suitable for small places, for specific operating areas, on jibs, on lift columns, etc.

Model **WITHOUT** transformer.

### TECHNICAL FEATURES

- Structural elements of cable reel in shock-resistant plastic material.
- Ratchet stop.
- Wall-mountable steel bracket.
- Working temperature: -5°C/+ 40°C.













Art.	9001/T306	9001/328 230V	9001/328 24V
Description	Cable reel with lamp T306	Cable reel with fluo lamp 328 230V	Cable reel with fluo lamp 328 24V
m. coiled	m 8 (7+ 1)	m 8 (7+ 1)	m 8 (7+ 1)
feeding cable	1,5 m	1,5 m	1,5 m
cable type	H05 RN-F - 2x1mm <sup>2</sup>	H05 RN-F - 2x1mm <sup>2</sup>	H05 RN-F - 2x1mm <sup>2</sup>
lamp model	T306 	328 230V 	328 24V 
bulb	NO	YES	YES
max Watt bulb	60W	11W	11W
lamp holder	E27	2G7	2G7
lamp protection degree	IP20	IP55	IP55
reel protection degree	IP42	IP42	IP42
voltages input	Max 250V	230V	24V
	46	46	46
	mm 420x280x120 Kg 4,5	mm 420x280x120 Kg 4,5	mm 420x280x120 Kg 4,5



## MODELS FOR SPECIAL APPLICATIONS (water and dust proof)

High safety unit, with protection degree IP55/IP65. Suitable for particular places, where the highest protection is needed.



	MODELS WITHOUT TRANSFORMER			MODELS WITH TRANSFORMER	
					
Art.	5907/328 IP55 230V	5907/328 IP55 24V	5907/370 IP65	5908/328 IP55	5908/370 IP65
Description	Cable reel with fluo lamp 328 230V	Cable reel with fluo lamp 328 24V	Cable reel with lamp 370	Cable reel with transfo + fluo lamp 328 24V	Cable reel with transfo + lamp 370
m. coiled	m 15,5 (14 + 1,5)	m 15,5 (14 + 1,5)	m 15,5 (14 + 1,5)	m 15,5 (14 + 1,5)	m 15,5 (14 + 1,5)
feeding cable	1 m	1 m	1 m	1 m	1 m
transfo features	-	-	-	power: 14VA input: 230V output: 24V	power: 63VA input: 230V output: 12V e 24V
cable type	H05 RN-F - 2x1mm <sup>2</sup>	H05 RN-F - 2x1mm <sup>2</sup>	H05 RN-F - 2x1mm <sup>2</sup>	H05 RN-F - 2x1mm <sup>2</sup>	H05 RN-F - 2x1mm <sup>2</sup>
lamp model	328 230V 	328 24V 	370 	328 24V 	370 
bulb	YES	YES	NO	YES	NO
max Watt bulb	11W	11W	60W	11W	60W
lamp holder	2G7	2G7	E27	2G7	E27
lamp protection degree	IP55	IP55	IP65	IP55	IP65
reel protection degree	IP55	IP55	IP65	IP55	IP65
voltages input	230V	24V	Max 250V	230V	230V
	60	60	60	44	44
	mm 390x310x165 Kg 5,0	mm 390x310x165 Kg 5,0	mm 410x305x185 Kg 5,0	mm 345x305x230 Kg 6,5	mm 345x305x230 Kg 6,5



# PORTABLE FLUORESCENT LAMP AM8 SERIES



REGISTERED DESIGN  
PATENT PENDING

**CAUTION:**  
24V model is suitable for 24V feeding only. Use with different feedings damages the lamp and no warranty will be applied.

24V lamps can also be powered at 24Vdc. There will be a loss of brightness of about 20%.



EN 60598-1 EN 60598-2-8  
EN 60335-1



2006/95/CE 2004/108/CE  
2002/95/CE

## TECHNICAL FEATURES

- Feeding electronic circuit fitted in the handle.
  - IP55 protection degree, if delivered with cable.
  - H05 RN-F cable 2x1 mm<sup>2</sup>.
- Available in 2 versions: 230V or 24V feeding.

**ART. AM8/10 230V** - Portable lamp 230V 50hz with 10 m. cable with 11W tube.

**ART. AM8 230V** - Lamp as above but WITHOUT CABLE.

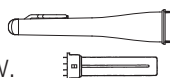
**ART. AM8/10 24V** - Portable lamp 24Vac 50hz with 10 m. cable with 11W tube

**ART. AM8 24V** - Lamp as above but WITHOUT CABLE.

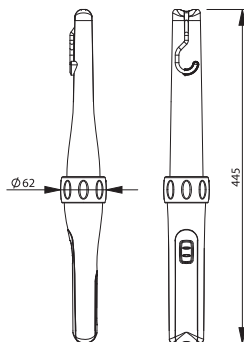
## SPARE PARTS

**ART. AM500** - Bell.

**ART. 355** - Tube 11 W.



## DIMENSIONS





# PORTABLE FLUORESCENT LAMP 328 SERIES

REGISTERED DESIGN  
PATENT PENDING

**CAUTION:**  
24V model is suitable for 24V feeding only. Use with different feedings damages the lamp and no warranty will be applied.

24V lamps can also be powered at 24Vdc. There will be a loss of brightness of about 20%.

EN 60598-1 EN 60598-2-8  
EN 60335-1



230V

24V

2006/95/CE 2004/108/CE  
2002/95/CE



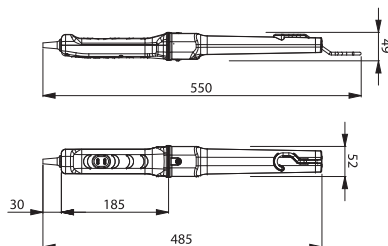
Portable fluorescent lamp with bright light, 11W tube. These lamps have a life 8 times longer than the traditional incandescent lamps, don't get warm and have a high source of light, with a minimum waste of energy.

## TECHNICAL FEATURES

- Feeding electronic circuit fitted in the handle.
- Switch.
- Rotating and adjustable hook.
- IP55 protection degree, if delivered with cable.
- H05 RN-F cable 2x1 mm<sup>2</sup>.

Available in 2 versions: 230V or 24Vac feeding.

## DIMENSIONS



**ART. 328/10 230V** - Fluo lamp 230V

50 Hz with 10 mt. cable and 11W tube.

**ART. 328 230V** - Lamp as above, WITHOUT cable.

**ART. 328/10 24V** - Fluo lamp 24Vac

50 Hz with 10 mt. cable and 11W tube.

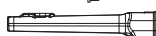
**ART. 328 24V** - Lamp as above, WITHOUT cable.

## SPARE PARTS

**ART. 355** - Tube 11W.



**ART. 528** - Bell.



328/10 24V



328/10 230V



# PORTABLE LAMP FOR ENERGY-SAVING BULB 375 SERIES

REGISTERED DESIGN  
PATENT PENDING

EN 60598-1 EN 60598-2-8  
EN 60335-1



2006/95/CE 2004/108/CE  
2002/95/CE



## TECHNICAL FEATURES

- Switch
- Foldout, rotating and adjustable hook
- Replaceable protection bell
- Soft touch handle
- IP65 protection degree (water and dust proof)

CAUTION: **delivered without bulb.**

Portable lamp to be used only with energy-saving bulbs E27 Edison fitting max. 15W.

**ART. 375** - Portable lamp for energy-saving bulb, WITHOUT cable.

**ART. 375/10** - portable lamp for energy-saving bulb with 10 mt. H05 RN-F cable, 2x1 mm<sup>2</sup>.

## SPARE PARTS

**ART. 379** - Bell.



## AVAILABLE BULBS



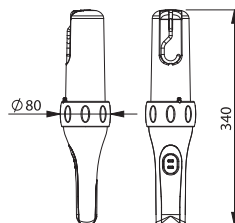
Bulb with protection cap

**ART. 376** - 11W - 24Vac bulb

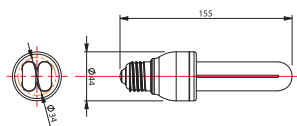
**ART. 377** - 11W - 12Vdc bulb

**ART. 378** - 11W - 230Vac bulb

## DIMENSIONS



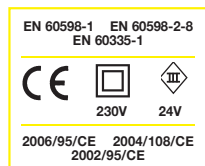
## MAX DIMENSION BULB







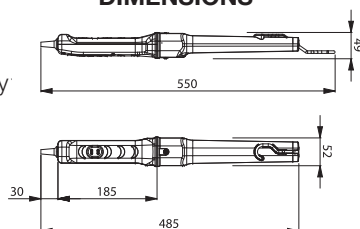
## PORTABLE LAMP 329 SERIES



### TECHNICAL FEATURES

- Portable lamp with 30 LEDs.
- Replaceable LEDs group.
- Ultra bright light, no development of heat and low energy consumption.
- Available in 230V or 24Vdc/ac power supply.
- Protection degree IP55.
- H05 RN-F cable 2x1 mm<sup>2</sup>.
- Protected switch.

### DIMENSIONS



**ART. 329/10 230V** - Lamp with 30 LEDs, 230V, with 10m cable.

**ART. 329 230V** - Lamp with 30 LEDs, 230V, no cable.

**ART. 329/10 24V** - Lamp with 30 LEDs, 24V, with 10m cable, 12Vdc/ac - 24Vdc/ac power supply.

**ART. 329 24V** - Lamp as above, without cable.

### SPARE PARTS

**ART. 529** - Bell.

## INSPECTION LAMP 306 SERIES

### TECHNICAL FEATURES

The T306 safety inspection lamp has the following features.

- Screw cap E27.
  - Insulated handgrip made of oil, acid, solvent-resistant Moplen.
  - Reflecting cage made of zinc-coated steel.
  - Recessed lever switch.
  - Flexible cable and security fastening device.
  - Rotating hanging-hook.
  - Protection degree IP20. H05VV-F cable 2x0,75 mm<sup>2</sup>.
- Delivered without bulb.

**ART. T306** - Inspection lamp without cable.

**ART. 306/10** - Inspection lamp with 10 m cable.

**ART. 606** - Inspection lamp, with clip, without cable.

**ART. 606/10** - Inspection lamp, with clip, with 10 m cable.





## INSPECTION LAMP 370 SERIES



### TECHNICAL FEATURES

- Plastic bell.
- Screw cap E27.
- Max 60W bulb
- Protection degree IP65, if delivered with cable.
- H05 RN-F cable 2x1 mm<sup>2</sup>.
- Delivered without bulb.
- Protected switch.
- Rotating and adjustable hook.

**ART. 370** - Inspection lamp without cable.

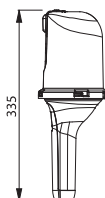
**ART. 370/10** - Inspection lamp with 10 m cable.

### SPARE PARTS

**ART. 371** - Bell.



### DIMENSIONS



370/10

## MAGNETIC BASE FOR INSPECTION LAMP



**ART. 050** - Magnetic base for inspection lamp with Velcro for retaining the lamp.





# DIABOLUX RECHARGEABLE LAMP



\*Energy saving mode  
200 lumen



Strip power LED: the latest available technology for high power & high efficient led lighting.

– **Full Digital Technology:** the accurate charge control, and the smart luminous management, are handled by a new generation microcontroller.

– **Standard mode:** 100% luminous flux. Active life 2,5h.

– **Energy Saving mode:** doubling of battery lasting with ~55% luminous flux. (it's activated, once the lamp is switched on, pressing the soft touch switch for a while)

– **Charge reserve mode** (additional running time, once the battery has been detected low)

– **Discharge Warning:** battery low warning (the STRIP LED will shortly blinks-off when the battery become low).

– **Charging base:**

– A Yellow Led indicates when mains is connected.

**ART. 345** - Rechargeable lamp + 2 battery charger.

## SPARE PARTS

**ART. 345/V** - Transparent cover.



**ART. 345/L** - Lamp.



**ART. 345/C 230V** - Charger base + charger 110/240 V.

**ART. 345/C 12V** - Charger 12V.



# NEW

REGISTERED DESIGN  
PATENT PENDING



EN 60598-1 EN 60598-2-8  
EN 60335-1

CE

2006/95/CE 2002/95/CE  
2004/108/CE



# STRIP LAMP LED RECHARGEABLE LAMP ART. 344



=



STRIP LAMP: rechargeable and powerful led lamp.

- Luminous source Strip Led
- Luminous flux 360 lm
- Lamp protection degree IP65
- Replaceable transparent cover.
- Protected soft touch switch.
- Rotating hook.
- Run time 3h
- Charging time 2,5h
- Battery NiMH - 2500 mAh
- Battery life (charging / discharging) 500 cycles
- Charger 100÷240 @ 50/60Hz
- Accurate charge control by microprocessor
- Pilot light on the battery charger:

**fixed red:** the lamp is not inserted, or not correctly inserted;

**flashing red:** lamp in recharge;

**fixed green:** the charge is completed. Charge maintenance function.

**ART. 344** - Strip Lamp rechargeable lamp + battery charger.

**ART. 344/6** - Displayer with 6 lamps art. 344.



## SPARE PARTS

**ART. 344/VY** - Transparent cover.

**ART. 344/L** - Lamp.

**ART. 344/C** - Battery charger.



REGISTERED DESIGN  
PATENT PENDING

EN 60598-1 EN 60598-2-8  
EN 60335-1

CE

2006/95/CE 2002/95/CE  
2004/108/CE



# LAS VEGAS LED RECHARGEABLE LAMP ART. 340



EN 60598-1 EN 60598-2-8  
EN 60335-1



2006/95/CE 2002/95/CE  
2004/108/CE



**LAS VEGAS:** rechargeable and powerful led lamp.

- 30 LED's ultra white lighting (1500 Lux at 50 cm.).
- Active life 6h
- Recharge time: 2,5h
- Lamp protection degree IP64, charger IP20.
- Structure made of shock proof and oil resistant rubber.
- Security electronic control of charge: the lamp can also be kept in the battery charger base.
- Replaceable transparent cover.
- Protected soft touch switch.
- Rotating hook.
- **Caution:** when the battery is almost down, one led on the lamp is red. When the switch doesn't stay inserted anymore, the battery is flat. Recharge the lamp.
- Battery 4,8V - 2500 mAh - Ni-MH.
- Battery charger 100-240V, 50-60 Hz.
- **Pilot light on the battery charger:**  
**fixed red:** the lamp is not inserted, or not correctly inserted;  
**flashing red:** lamp in recharge;  
**fixed green:** the charge is completed. Charge maintenance function.

**ART. 340** - Las Vegas rechargeable lamp + battery charger.

**ART. 340/6** - Displayer with 6 lamps art. 340

## SPARE PARTS

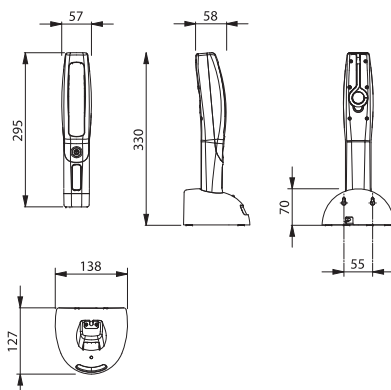
**ART. 341** - Transparent cover.

**ART. 340/L** - Lamp.

**ART. 340/C** - Battery charger



## DIMENSIONS





# BROADWAY FLUORESCENT RECHARGEABLE LAMP ART. 380

**plus**



BROADWAY: bright, strong and powerful rechargeable lamp with 11W fluorescent tube.

- Active life: approx. 2,5 hours
- Recharge time: approx. 1,5 hour
- Lamp protection degree IP65, battery charger protection degree IP20
- Electronic control of the charge: the lamp can be kept always on the battery charger
- Battery Polymer Li-ion 14,8V 1500mAh
- Battery charger 100-240V, 50-60Hz.
- Pilot light on the battery charger:
  - **Green:** the charge is completed, Charge maintainer function.
  - **Red:** lamp in recharge
- **Emergency light function:** the lamp, inserted on the battery charger, automatically light on when there is no power supply (user can easily enable/disable this function).

**ART. 380** – Rechargeable lamp Broadway + battery charger.

## SPARE PARTS

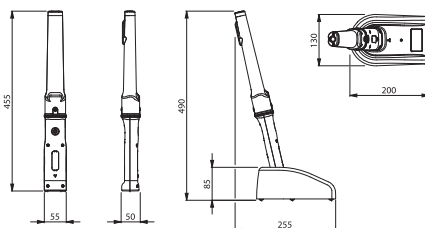
**ART. 588** – Trasparent cover.

**ART. 380/L** – Lamp.

**ART. 380/C** – Battery charger.

**ART. 355** – 11W fluorescent tube.

## DIMENSIONS



EN 60598-1 EN 60598-2-8  
EN 60335-1



2006/95/CE 2002/95/CE  
2004/108/CE





## RADIATOR TESTER ART. 415

### TECHNICAL FEATURES

Equipment for pressure testing the cooling system of cars.

Delivered in a strong fitted storage/carry case complete with all adaptors essential for the test on european and foreign cars.

Supplied with long, flexible extension for applications difficult to reach.

The different adaptors can be easily replaced, since they are fitted with a quick coupler system.

It enables the user to determine immediately any leak in the cooling system and any incidental failures:

- faulty or worn hoses;
- loose jubilee clips;
- radiator leaks;
- faulty cooling circuit;
- burnt or badly settled cylinder head gaskets.



**ART. 415** - Cooling system tester complete with adaptors.

**ART. 413/2010** -Updated kit of caps for radiator tester art. 415, version before 2007.

## RADIATOR FILL ART. 417

### TECHNICAL FEATURES

Device for rapidly filling the radiator and the cooling system of cars and trucks.

The system works by vacuum, and allows a rapid and total filling of the cooling system without any need to start the vehicle several times during the filling operations.

When a cooling system is filled with liquid, air bubbles are generated, and these must be completely eliminated.

With radiator fill, a vacuum inside the system is created that allows a full and rapid filling, in a short time and without any problems. Vacuum is generated using compressed air.

Radiator fill suits both cars and lorries. Together with the kit, 3 different size cones are supplied to fit different radiator necks.

The device works on a system previously freed from any liquid, and allows also its tightness test.



### TECHNICAL DATA

- Working pressure from 5,5/A to 12,0 bar
- Max air use 100 l/min to 6 bar
- Air connexion 1/4" F
- Temperature from -20° to +50°C
- Adapters:
  - Ø 16 - 33 mm
  - Ø 23 - 41 mm
  - Ø 34 - 52 mm

**ART. 417** - Radiator Fill by vacuum.



## PROTEGGI CENTRALINE ART. 450

### TECHNICAL FEATURES

This instrument is designed to protect on-board electronics from the voltage spikes that may occur for example while employing electric power from an external source for fast starting purposes (battery connected to another vehicle or booster). This appliance is simple and quick to use. Connect the two clamps to the battery poles. The red light indicates operating voltage (12V/24V). The buzzer sound indicates the presence of voltage spikes that the surge protector is dispelling.



**ART. 450** - Electronic control unit surge protector 12 - 24V

Transient voltage suppression device (TVS) data:

- RATED BATTERY VOLTAGE		12V	24V
- Rated working peak voltage (Rated stand off voltage)		17,1V	31,4V
- Breakdown voltage (min. clamping voltage)		18V	33V
- Maximum clamping voltage	8/20 $\mu$ S	32,5V / 308A	59,0V / 169A
	10/1000 $\mu$ S	25,2V / 59,5A	45,7V / 33A
- Peak pulse power dissipation 10/1000 $\mu$ S		1500W	1500W

## COMPRESSED AIR VALVE GRINDER

An essential equipment in any workshop for a quick valve grinding.

Robustly made, light, practical and easy to handle, it can be used even by inexperienced operators. Air consumption is greatly reduced. Speed control is achieved by increasing or decreasing air flow. This equipment uses a standard air line and features left and right alternate rotation to simplify valve grinding and reduce operator fatigue.

It is supplied in a strong storage case, and comes complete with a number of suction pads and accessories.

**ART. 209** - Compressed air valve grinder with accessories.

### SPARE PARTS

- ART. 235** - Small rubber suction pad  $\varnothing$  22 mm.
- ART. 236** - Medium rubber suction pad  $\varnothing$  33 mm.
- ART. 237** - Large rubber suction pad  $\varnothing$  40 mm.
- ART. 239** - Universal joint.
- ART. 240** - Reducer  $\varnothing$  7 mm.
- ART. 241** - Reducer  $\varnothing$  9 mm.
- ART. 242** - Two screwdrivers.
- ART. 244** - Reducer  $\varnothing$  6 mm.





## SIGNAL DETECTOR ART. 482



- SAVES TIME
- HELPS FAULT FINDING
- IDENTIFIES THE DEFECTIVE COMPONENT WITHOUT REMOVING IT 90% OF THE TIMES!
- PREVENTS CABLE AND CONNECTOR DAMAGE

### EXAMPLE OF TESTABLE COMPONENTS



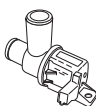
PETROL AND DIESEL ELECTRIC INJECTORS



PETROL AND DIESEL INJECTORS PUMP



FLOW REGULATORS



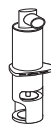
SOLENOID VALVES



HIGH VOLTAGE COILS



SPARK PLUGS



EGR VALVES



IDLE SPEED ADJUSTING VALVES

Diagnostics equipment designed to allow car mechanics to test motor electrical components (such as coils, electric injectors, adjusting valves etc.) without having to remove them or disconnect them and without stripping or damaging cables.

The instrument must be powered by a 12V power supply (car battery) and is equipped with an inductive probe which, when placed close to the component to be tested, confirms its operation with an audible and visual indicator.

The equipment detects the magnetic field generated by the component when engine is started or is working.

**ART. 482** - Signal detector.

## COBRA-FILL ART. 299



A unique funnel manufactured from a plastic which is petrol, oil, solvent and acid resistant. The lower part of the funnel is a long, flexible nozzle. The nozzle is stepped in 3 sizes and can be cut according to the hole diameter / flow required.

**ART. 299** - Cobra-fill.



## TURBOZECA EXHAUST GAS EXTRACTOR ART. 675

**CAR = 550 m³/h**

**AIR CONSUMPTION 330 lt/min** 

**TRUCK = 790 m³/h**

**AIR CONSUMPTION 430 lt/min** 



### COMPRESSED-AIR EXHAUST GAS ASPIRATOR

- New-concept air operated exhaust gas extractor.
- Adjustable aspiration power.
- Just one model for cars, vans, motorcycles and trucks.
- No moving parts.

### TECHNICAL FEATURES

- noise level 70 dB

Supply pressure 6 bar.

Minimum Ø of supply pipe 10 mm.

Connect the exhaust gas extractor to the filtered and not-lubricated compressed-air line.

- Mounted on trolley
- Suitable for fitting CO<sub>2</sub> control probes.

**Do not use during FAP regeneration operation.**

**ART. 675** - Turbozecca: exhaust gas extractor complete with wheeled trolley, diaphragm for cars and trucks, pipe Ø 120 mm (4.8 inches) length 6 m (20 feet).

REGISTERED DESIGN  
PATENT PENDING

### SPARE PARTS

**ART. 678** - 6 m (20 feet) hose section complete with clamps and connection sleeve

**ART. 675.225** - Wheel kit

**ART. 675.080** - Rubber nozzle

## ROTOZECA FOR SAFETY BARRIERS

ISO EN 12100-1  
ISO EN 12100-2



2006/42/CE

**9801**



**5801**



These reels have been designed to provide temporary barriers around dangerous areas, i.e. car repair pits. It comes complete with mounting hinge, hook and eyelet.

**ART. 5801** - Automatic cable reel with 16 m of red/white band, to clearly identify the danger area or obstruction.

**ART. 9801** - Automatic cable reel with 8 m of red/white band, to clearly identify the danger area or obstruction.



## JUMBOZECA ART. 673



### TECHNICAL FEATURES

Portable Exhaust Gas Extractor designed to operate in any size workshop. Is an ideal alternative to fixed, space consuming, expensive systems. Suitable for use on cars, vans, motorcycles, light commercial, it allows the garage mechanic to work on the vehicle with the engine running, without causing pollution of the air or contravening the current workshop regulations. Mounted on a robust metal trolley with simple and easy to adjust height and suction setting. The extractor doesn't cause problems when using a CO<sub>2</sub>.

The Extractor outlet hose has a quick fit collar, for easy disconnection when moving from one location to another.

- 220 V engine. 50 Hz.
- Protection degree IP54.
- Supplied with 10 m of power cable, 3G1,5 mm<sup>2</sup> section.
- Delivered with 6 m plasticized heat-resistant (130°) ducting hose, 120 mm diameter, supported by a steel wire helix incorporated within 2 textile plies covered with self-extinguishing PVC.
- Capacity 410 m<sup>3</sup>/h.
- Max length outlet hose 18 m.
- Max height outlet hose 12 m.

**CAUTION: Do not use during FAP regeneration operation.**

**ART. 673** - Exhaust gas extractor with trolley and 6 m hose.

### OPTIONAL

**ART. 678** - Additional Ducting Hose (6 metres).

## PULLEY REMOVING WRENCH



Ideal for removing and installing any type of grooved pulley.

This modern tool locks the grooved pulley firmly in position, avoiding the possibility of damage to the pulley and allows tightening or untightening of the pulley locking screws without any difficulty.

Suitable for alternator and water pump pulleys and essential for electric motors on compressors, washing machines, tool machines etc.

Can also be used to rotate the camshaft for engine timing and for removal of oil and Diesel fuel filters.



**ART. 719** - Pulley Removing Wrench, with multi-race belt.

**ART. 720** - Pulley Removing Wrench, with V-type belt.



## PETROL RECORDING COMPRESSION TESTER

### TECHNICAL FEATURES

- Recording card with wide scale approx. 50 mm of coated surface provides clear, accurate print out of test.
- Possibility of recording 8 tests on the card (+2 optional ones).
- Quick connection system locates into the spark-plug hole and expands due to pressure in cylinder.

**ART. 362** - Recording compression tester for petrol engines (with 50 spare cards, 5 spare rubbers and 1 adapter for M12 spark plug Art. 763).

### SPARE PARTS

**ART. 364** - Set of 5 replacement rubbers.

**ART. 365** - Set of 50 cards.

**ART. 763** - Adapter for M12 spark plug.

### OPTIONAL

**ART. 762** - Adapter for M10 spark plug.



**ART. 764** - Adapter for M18 spark plug.

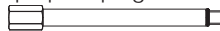


**ART. 765** - Adapter M14 for Ford Zetec motors.



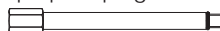
**ART. 766** - Long adapter for M12 deep spark plugs.

Length 190 mm.



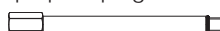
**ART. 767** - Long adapter for M14 deep spark plugs.

Length 190 mm.



**ART. 768** - Long adapter for M10 deep spark plugs.

Length 190 mm.



## TROLLEY WITH PLASTIC STRAPS ART. 230

Made with plastic straps of special fireproof material, oil, acid and grease resistant. Long comfortable shape; nylon pivoting castors.

**ART. 230** - Trolley

### SPARE PARTS

**ART. 232** - Replacement castor.

**ART. 338** - Replacement strap.







## DIESEL RECORDING COMPRESSION TESTER

### TECHNICAL FEATURES

- Recording card with wide scale.
- Possibility of recording on the card 8 tests (+2 optional ones).
- Quick connector system on dummy injectors, no spanners necessary.

The compression tester comes complete with:

- 1 quick connector M 14x1,5 for Zeca dummy injectors or original injectors fitted. No spanners necessary.
- 1 connector M 14x1,5 for use when the quick connector cannot be fitted.
- 1 connector M 12x1,5 for original injectors.
- 50 recording cards.

For the use of the recording compression tester for diesel engines, it is necessary to use a dummy injector or a heater plug suitable for the engine under test.

**ART. 363** - Recording compression tester for Diesel engines, delivered with 50 cards + 3 connectors, without dummy injectors.

### SPARE PARTS

**ART. 366** - Set of 50 spare cards.



## TOOL FOR ADJUSTING CLUTCH PLATES



The adjustment is directly carried out between the clutch plate and the pressure plate and they become joined to the tool and are re-assembled as a homogeneous body on the flywheel. Provides ease of installation and alignment without using the pilot bearing

**ART. 403** - Universal tool for adjusting clutch plates.



## DIESEL ENGINE INJECTOR TESTER



This injector tester is a bench-mounted hand-operated pump. Cracking pressure: working of the nozzles by examining if holes are obstructed and if there is back leakage, and by checking the spray pattern. It can be used to check the tightness of the delivery pipe of the injection pump.

It can also be used as a general purpose pressure tester on pipes, tanks, pump castings, etc. where high pressure is required.

**Caution: for the test, use the proper testing fluids according to ISO 4113 rules, viz. Shell Oil S. 9365.**

**ART. 470/400 B** - Tester 400 Bar with 1 connecting pipe art. 472 and 473.

**ART. 470/600 B** - Tester 600 Bar with 1 connecting pipe art. 472 and 473.

### SPARE PARTS

**ART. 472** - Connecting pipe 14x14 mm.

**ART. 473** - Connecting pipe 14x12 mm.

### ACCESSORIES

#### **ART. 269 - QUICK CONNECTOR ADAPTOR FOR INJECTOR PUMP.**

The quick connector adaptor enables the speedy attachment of Diesel pipes to injectors with threads 12 or 14 mm for testing, without the need of spanners.



## ASPIRDIESEL, GAS-OIL STEAM ASPIRATOR



Allows to improve the visual checking of the injectors, and, at the same time, to fully extract the fuel nebulized during the test and to canalize it into a proper collecting tank. The aspirator operates by a proper use of the depression got by compressed air, to guarantee highest safety.

A supporting clip holds the injector steady during the test.

**ART. 430** - Gas-oil steam aspirator with quick connector art. 269 (delivered without pump).



## BATTERY AND ALTERNATOR TESTER

### TECHNICAL FEATURES

- 12V battery test.
- 12V Alternator test.
- Simple and accurate use.
- Test time: 15 seconds!
- Battery test according to standard: EN - DIN - IEC - SAE - JIS.
- Suitable for standard batteries and with Gel technology.
- Temperature compensation.
- Double contact insulated clips (Kelvin connection).
- Test made at low current, without sparks or overheating so not to damage the electronic unit.
- The test doesn't run down the battery.
- 2x16 characters display at high visibility, with Led backlighting.
- Reading possibility in 6 languages.
- Polymer box, with soft-touch protection shell.



**ART. 210** - Battery and alternator tester (I, GB, F, D, E, NL).

**ART. 211** - Battery and alternator tester (I, GB, F, D, S, GR).

## BATTERY TESTER



207

### TECHNICAL FEATURES

- Precision instrument with moving coil.
- Clear separate scales for both 6 and 12 Volt applications.
- Plastic handle.

**ART. 207** - Battery tester.

### TECHNICAL FEATURES

- Same features as art. 207, but including:
- indicator lamp showing when load resistors are in use
  - encased resistance to avoid burning risks
  - The elongated design of this instrument allows to reach also the batteries located where access is not easy in the engine compartment.

**ART. 208** - Detector, battery tester.



208



## BATTERY FILLER

298



980



Manufactured in a special oil, acid and solvent resistant plastic, the automatic cut off level device is built into the nozzle.

Manufactured in 2 different versions:

**ART. 980** - Livell-Bat: small filler, capacity 1 litre.

**ART. 981** - Replacement nozzle for art. 980.

**ART. 298** - Fillerzeca: large filler with handle, capacity 2 litres.

**ART. 919** - Replacement nozzle for art. 298.

## POLINET ART. 977



Cleaning brush designed to quickly and efficiently remove acid deposits from battery poles and terminals.

**ART. 977** - Polinet. Minimum quantity: 15 pieces per package.

## BATTERY LIFTING STRAP ART. 883/A



This strap is designed as a convenient and easy method of lifting and carrying batteries. A fastening safety device prevents the strap from becoming unhooked.

**ART. 883/A** -Strap for batteries. Minimum quantity: 10 pieces per package.

## HYDROMETER ART. 920



Standard instrument for measuring the specific gravity of battery electrolyte. Each measurement will show the condition of the individual cells of a battery.

**ART. 920** - Glass hydrometer.

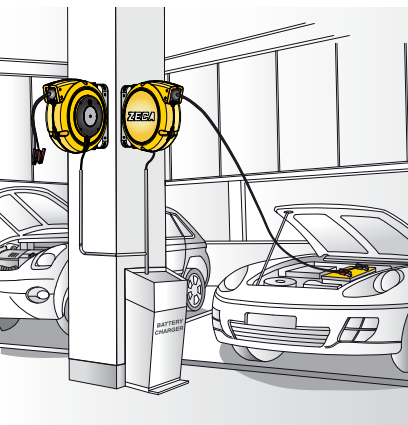


## CABLE REELS FOR BATTERY

6216

PLASTIC  
CASE

ALUMINIUM  
BODY



4216

Cable reels, designed to ease, where necessary, the connection battery charger/battery in recharge.  
For the use on traction batteries the user can replace the delivered clamps with the proper connector.

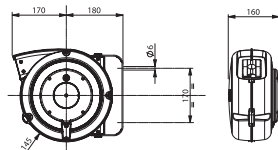
### REEL FEATURES 4216

- Plastic case.
- Delivered with thermal protector and incoming cable 1m.

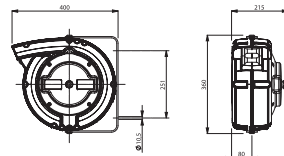
### REEL FEATURES 6216

- Die-cast aluminium case.
- Incoming cable 2 m.

### DIMENSIONS 4216



### DIMENSIONS 6216



Metres of coiled cable	Art.	Power	Cable reel IP-Code	Nominal voltage	Cable type
6m (4,5+1,5)	<b>4216</b>	30A	IP42	MAX 48V	2x16 mm <sup>2</sup> H05 VV-F
9m (7+2)	<b>6216</b>	30A	IP42	MAX 48V	2x16 mm <sup>2</sup> H05 VV-F



## ZECA CLIPS



926



925



314



322

- Strong jaws made of galvanized steel sheet.
- Spring of galvanized steel.
- Insulated plastic handles, oil/acid/solvent-resistant.

Art	A	length	weight	colours
926	400	215 mm.	580 gr.	R = red N = black
925	220	215 mm.	400 gr.	R = red N = black
314	150	176 mm.	140 gr.	R = red N = black
322	40	80 mm.	25 gr.	R = red * N = black *

\* Minimum quantity: 10 pcs.

## INSULATED CLIP ART. 320

- Brass jaws, capacity 200A
- Very strong spring to always assure a good contact.
- Cables up to a max of 16mm<sup>2</sup> - Max 48V can be installed.

**ART. 320 N** - Insulated clip, capacity 200 A, black.

**ART. 320 R** - Insulated clip, capacity 200 A, red.







## BOOSTER CABLES ART. 315



Zeca cables consist of 4 clips connected together by two flexible copper cables with plastic insulating, oil/ acid/solvent resistant coating.

Art.	Cable sec.	cable length	clips
315/3, 5/16	16 mm <sup>2</sup>	3,5 m	mod. 314
315/3, 5/25	25 mm <sup>2</sup>	3,5 m	mod. 925
315/4, 5/25	25 mm <sup>2</sup>	4,5 m	mod. 925

# ZECA

## COOLANT ANTI-FREEZE TESTER ART. 152



Allows, to check and reset ethylene glycol anti-freeze (normal anti-freeze). Quick and easy to use device, it permits to determine, with fair approximation, the freezing point of the water/ anti-freeze coolant.

The device calibration is obtained by taking, as a basis for the liquid under test, a temperature of around 50°.

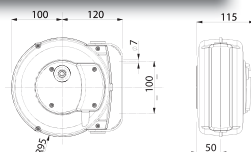
**ART. 152** - Zeca coolant anti-freeze tester for anti-freeze based on ethylene glycol.


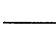


## CABLE REEL 9000 serie

### TECHNICAL FEATURES

- Mini cable reel.
- See cable reel serie XF technical feature.



Number of conductor	Conductors section (mm²)	Metres of coiled cable	Art.	KW  (20°C)		KW  (20°C)		Thermal protector
				230V	1,1 1,3 1,1 1,4	230V		
1 x	6	6 + 1	9006				no	
2 x	1	7 + 1	9001				YES	
	1,5	5 + 1	9002				YES	
3 G	1	6 + 1	9003				YES	
	1,5	5 + 1	9004				YES	

## CABLE REEL 4000 serie

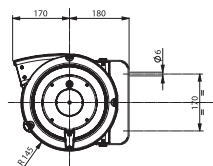
### TECHNICAL FEATURES


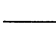
- See cable reel serie XF technical feature.



### OPTIONAL

**ART. 949/804-4000** - Optional device to make the bracket fastened.



Number of conductor	Conductors section (mm²)	Metres of coiled cable	Art.	KW  (20°C)		KW  (20°C)		Thermal protection
1 x	6	15 + 1	4106					no
	16	10 + 1	4116					no
2 x	1	17 + 1	4210	230V	0,9	1,4	YES	
		12 + 1	4210 RNF				YES	
	1,5	15 + 1	4215		1,1	1,6	YES	
3 G	1,5	14 + 1	4315		1,2	1,8	YES	
		9 + 1	4315 RNF				YES	
	2,5	9 + 1	4325			1,9	2,5	YES
		7 + 1	4325 RNF	YES				
4 G	1,5	10 + 1	4415	400V	1,4	1,9	no	
		8 + 1	4415 RNF				no	
	2,5	8 + 1	4425		2,0		2,7	no
		5 + 1	4425 RNF					no
5 G	1	10,5 + 1	4510	1,0	1,5	no		
	1,5	8 + 1	4515			1,4	1,9	no
		7 + 1	4515 RNF					no

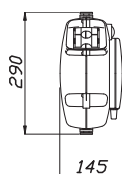
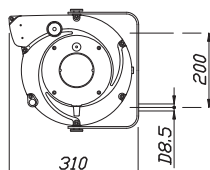
The most popular models are shown above. The full range is shown in our general catalogue or visit our website [www.zeca.it](http://www.zeca.it).


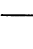


## CABLE REEL XF serie

### TECHNICAL FEATURES

- Shock resistant plastic external case.
- Cable roller guide.
- Ratchet stop device every 50 cm., easily removed if constant traction of cable is required.
- Double earth contact.
- Collector insulating power 2,5 Kv.
- Slipping with brass rings and brushes.
- Protection degree IP42.
- Working temperature -5°C/+40°C.
- Delivered without cable at feeding side.
- Available both with PVC cable and rubber cable.



Number of conductor	Conductors section (mm <sup>2</sup> )	Metres of coiled cable	Art.	KW  (20°C)	KW  (20°C)	Thermal protector	Reinforced collector
1 x	2,5	15 + 1,5	5836/XF			no	
	6	12,5 + 1,5	5834/XF			no	*
	16	8,5 + 1,5	5832/XF			no	*
2 x	1	14 + 1,5	5831/XF	0,9	1,4	YES	
		10 + 1,5	5831/XF RNF			YES	
	1,5	11 + 1,5	5830/XF			1,6	YES
	2,5	8,5 + 1,5	5829/XF			2,3	YES
3 G	1	12,5 + 1,5	5828/XF	0,9	1,4	YES	
		8 + 1,5	5828/XF RNF			YES	
	1,5	10 + 1,5	5827/XF			1,8	YES
		7 + 1,5	5827/XF RNF			YES	
	2,5		5825/XF			2,5	YES
			5826/XF				*
4 G	1	10,5 + 1,5	5824/XF	1,1	1,6	no	
	1,5	8 + 1,5	5823/XF			1,9	no
	2,5	5,5 + 1,5	5821/XF			2,7	no
			5822/XF				*
5 G	1	7,5 + 1,5	5844/XF	1,0	1,5	no	
	1,5	5,5 + 1,5	5843/XF			1,9	no

### OPTIONAL

**ART. 5100** - Conversion kit from XF in XL.

**ART. 949/5000** - Optional device to make the bracket fastened.

The most popular models are shown above. The full range is shown in our general catalogue or visit our website [www.zeca.it](http://www.zeca.it).



## CABLE REEL 7000 series

### TECHNICAL FEATURES

- Shock resistant plastic external case
- Cable roller guide
- Ratchet stop device every 50 cm.

**All cable reels are supplied with predisposition for cable-stop device off.** It can be easily inserted

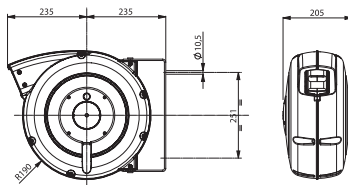
- Double earth contact
- Collector insulating power 2,5 Kv.
- Slipping with brass rings and brushes
- Protection degree IP42
- Working temperature -5°C/+40°C
- Delivered without cable at feeding side
- Available both with PVC cable and rubber cable.



### OPTIONAL

**ART. 949/805-7000** - Optional device to make the bracket fastened.



### DIMENSIONS



Number of conductor	Conductors section, (mm <sup>2</sup> )	Metres of coiled cable	Art.	KW  (20°C)		KW  (20°C)		Thermal protector		
1 x	16	20 + 2	7116	230V	1,1	230V	1,8	no		
2 x	1,5	25 + 2	7215					no		
3 G	1,5	25 + 2	7315					2,0	3,0	no
		20 + 2	7315 RNF							no
	2,5	20 + 2	7325							no
		17 + 2	7325 RNF							no
4 G	1,5	25 + 2	7415	400V	1,1	400V	1,8	no		
		16 + 2	7415 RNF					no		
	2,5	18 + 2	7425					2,0	3,0	no
		13 + 2	7425 RNF							no
5 G	1,5	20 + 2	7515		1,5		2,2			no
		15 + 2	7515 RNF							no
	2,5	15 + 2	7525					3,0	no	
		10 + 2	7525 RNF						no	

The most popular models are shown above. The full range is shown in our general catalogue or visit our website **[www.zeca.it](http://www.zeca.it)**.



# HAND-OPERATED CABLE COILERS 3500

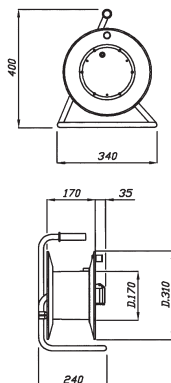


EN 61242 EN 60335-1



2006/95/CE 2002/95/CE

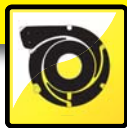
## DIMENSIONS



Socket type	Cable section	Metres of cable	Art.	Cable	W	Thermic protection
no sockets	—	NO cable	3501	—	—	NO
4 sockets	—	NO cable	3507	—	—	YES
10/16 A 2P+T	3G1,5	25	3508	H05 VV-F	1400	YES
Schuko	3G1,5	40	3509	H05 VV-F	1200	YES
(plug 16A 2P+T)	3G2,5	25	3510	H05 VV-F	2100	YES
	3G2,5	40	3511	H05 VV-F	1800	YES
2 sockets	—	NO cable	3512	—	—	YES
10/16 A 2P+T	3G1,5	25	3513	H05 VV-F	1400	YES
Schuko 1 socket (blue)	3G1,5	40	3514	H05 VV-F	1200	YES
CEE 16A (plug)	3G2,5	25	3515	H05 VV-F	2100	YES
CEE 16A 2P+T)	3G2,5	40	3516	H05 VV-F	1800	YES
2 sockets (blue)	—	NO cable	3517	—	—	YES
CEE 16A	3G1,5	25	3518	H05 VV-F	1400	YES
(plug CEE	3G1,5	40	3519	H05 VV-F	1200	YES
16A 2P+T)	3G2,5	25	3520	H05 VV-F	2100	YES
	3G2,5	40	3521	H05 VV-F	1800	YES
	3G2,5	30	3526	H07 RN-F	1800	YES
2 sockets (red)	—	NO cable	3522	—	—	NO
CEE 16A 16 A 3P	4G1,5	25	3523	H05 VV-F	2200	YES
+T 380V	4G1,5	40	3524	H05 VV-F	1900	YES
(plug CEE	4G2,5	30	3525	H05 VV-F	2500	YES
16A 3P+T)	4G2,5	30	3527	H07 RN-F	2500	YES

All the models are “CE” marked except incomplete models (without sockets and/or without cable), where “CE” marks must be placed by whom fits sockets and/or cables and puts on the market.

We cannot supply cable reels with different lengths from those shown in the above schedule.



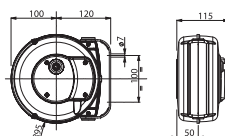
# EXTENSION REELS

Spring operated cable reels, suitable to be used as extension cord, allow the user to have always an available socket where needed.

## TECHNICAL FEATURES

- Swivelling bracket.
- Cable ratchet stop device.
- With incorporated thermic protection (excluded AL series).
- Double earth contact.
- Working temperature:  $-5^{\circ}/+40^{\circ}\text{C}$ .

## DIMENSIONS 9000 series



EN 61242 EN 60335-1



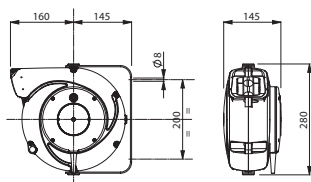
2006/95/CE 2006/42/CE  
2002/95/CE



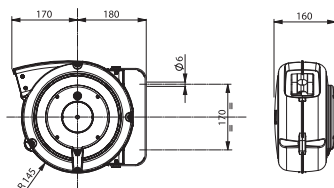
Art. SILVER		Art. YELLOW	
EXTENSION 6 m		EXTENSION 11,5 m	
EXTENSION 15 m		EXTENSION 15 m	
Art. YELLOW		Art. YELLOW	
Description		Description	
m. coiled cable		m. coiled cable	
socket, plug, incoming cable		socket, plug, incoming cable	
W (20°C)		W (20°C)	
W (20°C)		W (20°C)	
thermic protection		thermic protection	
V max		V max	
9004/GS		5827/XF GS	
Extension reel with Schuko plug and socket		Extension reel with Schuko plug and socket	
m 6 (5 + 1)		m 11,5 (10 + 1,5)	
3G1,5-H05W-F		3G1,5-H05W-F	
YES (Schuko plug and socket)		YES (Schuko plug and socket)	
NO		NO	
1400		1200	
1900		1800	
YES		YES	
YES		YES	
500		500	
100		44	
mm 250x195x145 Kg 2,5		mm 355x310x180 Kg 3,5	
5527/XF GS		5527/XF	
5827/XF		4315/GS3	
Extension reel		Extension reel with 3 Schuko plug and socket	
m 11,5 (10 + 1,5)		m 15 (14 + 1)	
3G1,5-H05W-F		3G1,5-H05W-F	
YES (Schuko plug and socket)		YES (Schuko plug and socket)	
1200		1200	
1800		1800	
YES		YES	
500		500	
44		44	
mm 355x310x180 Kg 3,5		mm 355x310x185 Kg 5	



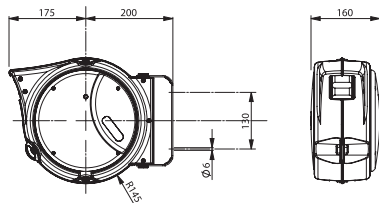
## DIMENSIONS 5000 series



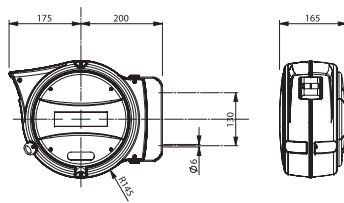
## DIMENSIONS 4000 series



## DIMENSIONS AM series



## DIMENSIONS AL series



**4315/S GS**



**4315/S**



**4315/GS**



**4315**



**AM40/315 GS3**



**AM40/315**



**AL41/315 GS3**



**AL41/315**

Extension reel  
with  
Schuko  
plug and socket

Extension  
reel

Extension reel  
with  
3 Schuko  
plug and socket

Extension  
reel

Extension reel  
with  
3 Schuko  
plug and socket

Extension  
reel

m 15 (14 + 1)  
3G1,5-H05W-F

m 15 (14 + 1)  
3G1,5-H05W-F

m 15 (14 + 1)  
3G1,5-H05W-F

m 15 (14 + 1)  
3G1,5-H05W-F

m 15 (14 + 1)  
3G1,5-H05W-F

m 15 (14 + 1)  
3G1,5-H05W-F

YES  
(Schuko plug and socket)

NO

YES  
(Schuko plug and socket)

NO

YES  
(Schuko plug and socket)

NO

1200

1200

1200

1200

1200

1200

1800

1800

1800

1800

1800

1800

YES

YES

YES

YES

YES

NO

500

500

500

500

500

500

44

44

44

44

44

44

mm 355x310x180  
Kg 5

mm 355x310x180  
Kg 5

mm 355x310x180  
Kg 5

mm 355x310x180  
Kg 5

mm 355x310x180  
Kg 5

mm 355x310x180  
Kg 5

The most popular models are shown above. The full range is shown in our general catalogue or visit our website [www.zeca.it](http://www.zeca.it).









Zeca products are well known all over the world for quality and technology and strictly conforms to the rules.

Technical features are clearly shown at side of each item. Products, if required, conform to EEC rules and are regularly CE marked. The selection of the required model should be made by customer according to the foreseen use. User has the responsibility to check that the selected model is suitable for his working place.

#### **WARRANTY:**

- 12 months from the date of purchase, unless otherwise stated.
- The warranty of 12 months refers to defects on new products delivered by us, used in a proper way. Are therefore excluded the parts subject to wear and tear (cables, springs, hoses, collectors, etc.) or eventually damaged by users.
- It remains obviously excluded any other indemnity form.
- The warranty consists in the replacement free of charge or alternatively in the repair to standards in our works of products subject to malfunction that in the opinion of our technical staff has been caused by defective parts.
- All carriage charges remain at charge of the purchaser.
- The warranty will not apply when goods have been damaged due to misuse.

Pictures, explanations and technical details of this catalogue are supplied in indicative mood and without any time bond. Consequently ZECA has the right to make changes, without notice, for the sake of improving the products or for any constructive or commercial requirement.

#### **PRODUCT LIABILITY:**

ZECA products are insured for "PRODUCT LIABILITY" worldwide coverage.

#### **DIRECTIVE 2002/95/EC (1) - 27/01/2003 (ROHS):**

We Zeca SpA **DECLARES**

that all our products, when affected by Directive 2002/95/Ec (1) dated 27/01/2003 and any further changes, meet the RoHS requirements.

**ZECA**

A5  
AOSTA

A4 TORINO/MILANO

CUORGNE'

RIVAROLO

S. GIORGIO

USCITA  
N. 3 - S.S. 460

FELETTA



CASELLE

CHIVASSO

SETTIMO TORINESE

**TORINO**

RIVOLI

MILANO

TORINO

ROMA

A6 SAVONA

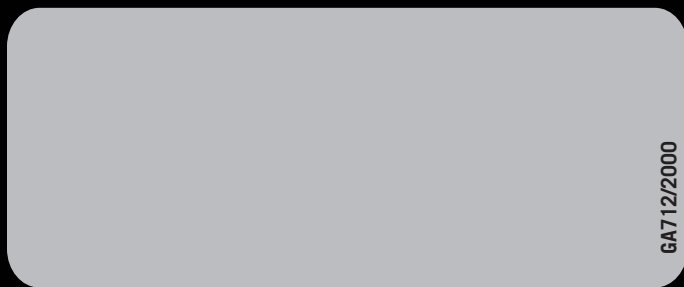
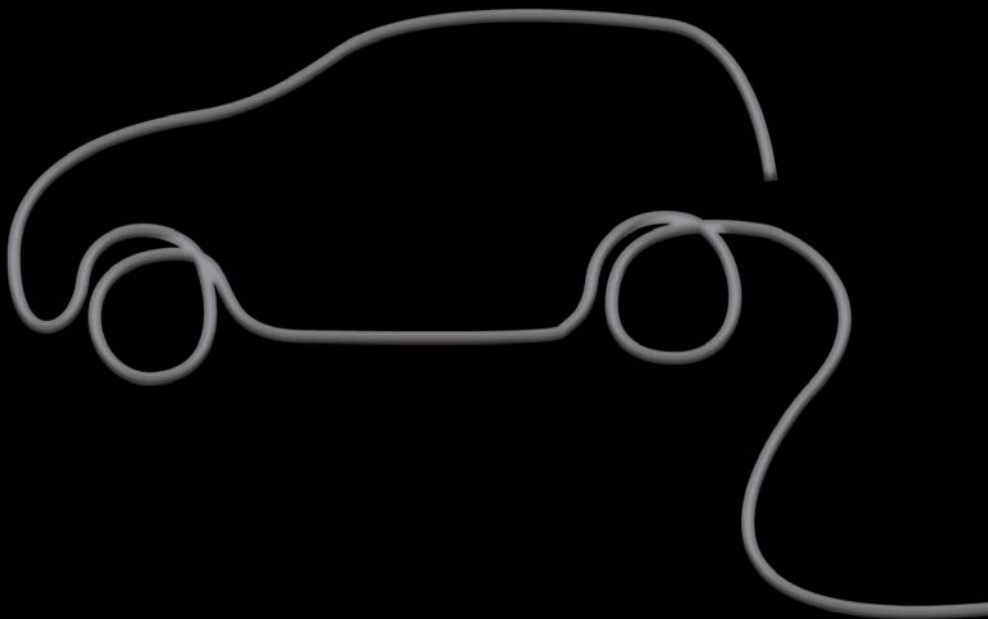
A26  
GENOVA

ALESSANDRIA

**ZECA**



# **ZECA**



GA712/2000

**ZECA S.p.A. - [www.zeca.it](http://www.zeca.it)**

**Strada della Chiara, 25 - 10080 Feletto Canavese (Torino) Italy**  
**[info@zeca.it](mailto:info@zeca.it) [italia@zeca.it](mailto:italia@zeca.it) [export@zeca.it](mailto:export@zeca.it) [contab@zeca.it](mailto:contab@zeca.it)**  
**Tel. +39 0124 499611 Fax +39 0124 490669**